

We are:

China's Top Grade Manufacturer for Steel Structure Manufacturing
A-level for Professional Project Design of Steel Structure
National Grade 1 Speciality Contractor for Steel Structure

Standing director of China's Construction and Metal Structure Association

Member of China's Steel Structure Association and Shanghai Metal Structure Industry Association

Deputy chairman of Zhejiang Steel Structure Industry Association



FROM DESIGN, FABRICATION OF EVERY MEMBER TO INSTALLATION OF EVERY STEP, WE ALL PURSUE ACCURACY AND PERFECTION.

MAIN STEEL STRUCTURE



SECONDARY STEEL STRUCTURE



ROOF & WALL SYSTEMS, AND OTHER ACCESSORIES



PRODUCTION LINES

Our group introduced from abroad the world-class professional production lines of steel structure, has the most advanced automatic H-beam production lines, pipe truss, box beam production lines, CNC hydraulic punching after-cutting C and Z types steel production lines, wall & roof panels, metal sandwich panel production line, etc., can complete all kinds of light steel, heavy steel, high-rise multi-spatial structure steel products processing tasks with high quality and efficiently.

Boxbeam Production Line



Box Assembling Machine

Intersection Line Cutter

Molding Machine



Dual-arc Double Wire Welder

Electroslag Welder

Face Miller

Net Rack Production Line



H Type Steel Production Line



Tridimensional Drill Machine

CNC Sawing Machine

CNC Spot Facer

Main Shot Blasters



Accessories Production Lines



PACKING & LOADING

We possess the unique most professional and best packaging in China presently - **FRAMING PACKAGE**, which perfectly protects the structural steel members from any impact damage during the transport. Of course, we also can package according to customer's requirements. Generally, be loaded into 40/20GP, 40HQ, 40OT or Bulk carrier.



TECHNOLOGY R&D

Our group has over 1,200 employees of whom 206 are engineering technicians of all levels and all kinds and **over 60 are state Grade 1, Grade 2** registered structure engineers, builders and architects.

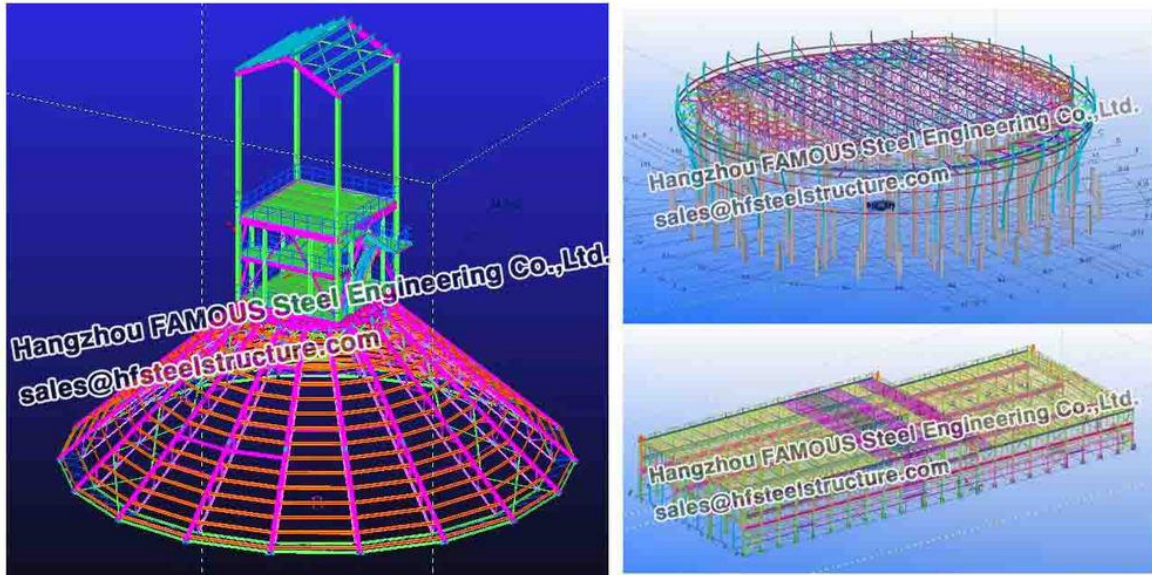
The company has senior colleges and professional technology design organizations as the technology backup force and has established wide cooperation and R&D relations with such technology research institutes as **Zhejiang University, Northwestern Polytechnical University, Zhejiang Shuren University, etc.**



DESIGN AND DETAILING

Standard: America Standard, Australia Standard, England Standard, China Standard, etc.

Software: SAP2000, Auto CAD, PKPM, RSTAB, PROE, MTS, Tekla Structures(Xsteel), 3D3S, Tarch, etc.



QUALITY MANAGEMENT

TODAY'S QUALITY, TOMORROW'S MARKET

Our group has established an advanced physical and chemical testing center of steel structure, owns the testing equipment such as electronic universal testing machine, electro-hydraulic servo universal testing machine, elemental analyzer, torsional testing machine, impact testing machine, ultrasonic flaw detector, blue ink coating thickness gauge, liquid crystal pendulum clock impactor, etc. In a large number of engineering practices, the company organized a high-quality construction team who grasp the leading construction technology, found scientific and strict construction management control process, has a control of the whole construction process to ensure the project quality.



ZBC-300B液晶摆锤冲击机
ZBC-300B LC pendulum clock impactor

SHT4106电液伺服万能试验机
SHT4106 electro-hydraulic servo universal tester



CTM5504电子万能试验机
CTM5504 electronic universal tester

CTT-1000扭转试验机
CTT-1000 torsional testing machine



元素分析仪
Elemental analyzer

ZWK-4维卡热变形
ZWK-4 Vicat thermal distortion

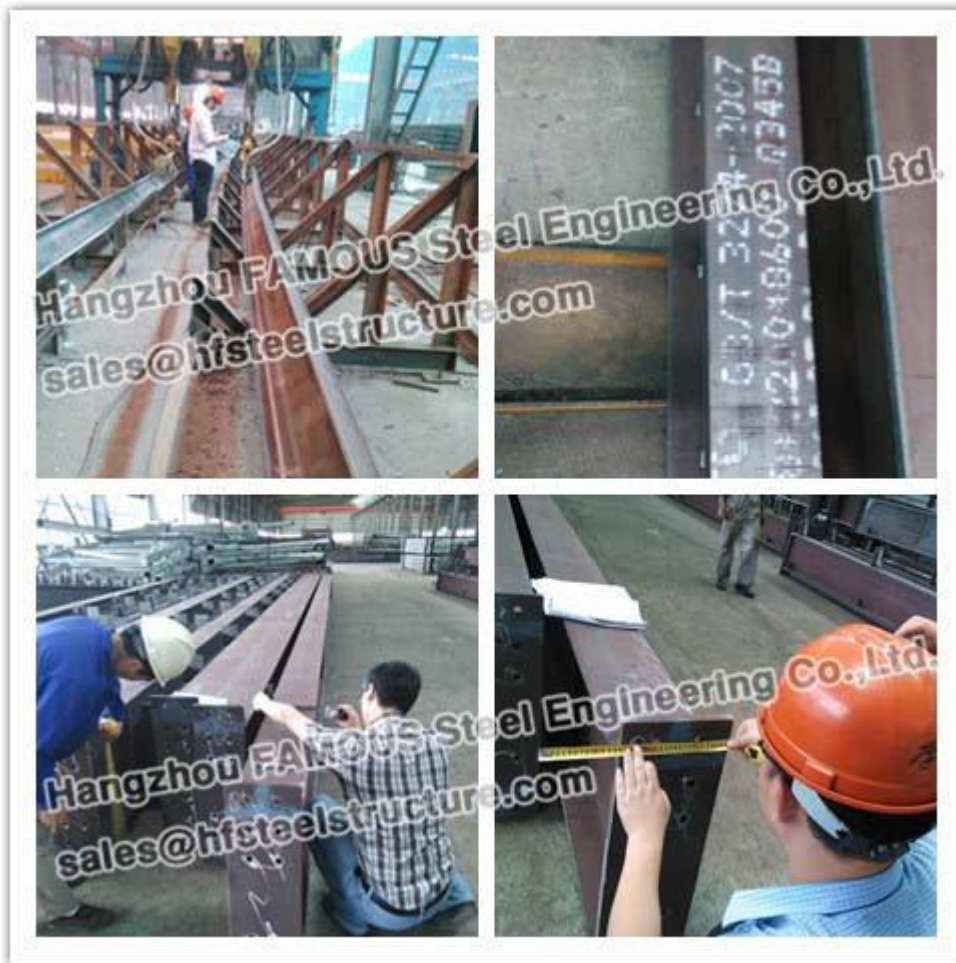
FTFC-2002全自动建材放射检测仪
FTFC-2002 all-automatic radiation meter
of building materials



Nondestructive Flaw Detection Competition of Welding Operators Technology Exchange

QUALITY INSPECTION BY BV, SGS, SKM, ETC.

Systematic Quality Process and Progress Control documentation: our fabrication process has been controlled by series of documentation and quality testing which are monitored and certificated by **BV, SGS, SKM, JACOBES etc world-famous third party inspection organization.**



CERTIFICATIONS

We have **CE certificate, ISO9001 Quality Control Certificate, ISO14001 Environment-friendly Certificate etc systematic certificates** to ensure our whole production progress controllable.

We also have systematic Quality Process and Progress Control documentation: **Our fabrication process have been controlled by series of documentation and quality**

testing which are monitored and certificated by BV, SGS, SKM, JACOBE S etc world-famous third party inspection organization.



SOME OF OUR **WORKSHOP/ WAREHOUSE PROJECTS**

AREVA Transformer Factory Project:

Covering an area totaled 33,842 sq.m, the program consumed steel in 4299.5 tons, the column height is 31-33 m, and the inside is installed with the bunk bed traveling crane with the maximum hoisting capacity in 400 tons.

CHILE Piping-truss Workshops Project:

90m Single-span Workshops.

NEW ZEALAND Barns / Grain Warehouses:

light gauge steel structure with cold bended profiles.

BOLIVIA Cement Plant:

Steel consumption: 3,655.72 tons in the first phase, 7,200 tons in the second phase.

LDK Polysilicon Public Project:

Was generally contracted by FLUOR CO., LTD., the total steel consumption volume for Phase I project reached over 30,000 tons and this program was in a high-rise steel structure of 4-7 floors.



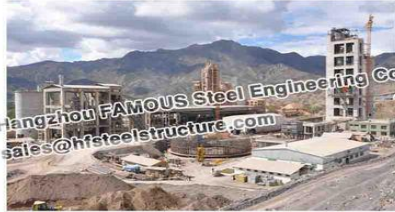
AREVA Transformer Factory Project
Covering an area totaled 33,842 sq.m, consumed steel in 4299.5 tons



CHILE Piping-truss Project
90m Single-span Workshop



LDK Polysilicon Public Project
Generally contracted by FLUOR CO., LTD.



BOLIVIA Cement Plant
3,655.72 tons in the first phase
7,200 tons in the second phase



NEW ZEALAND Barns / Grain Warehouses
Normal structural steel warehouses or light gauge steel structure with cold bended profiles

CUSTOMERS' VISITS

Welcome your visit! 😊

